

RIPS/RIBFでの励起状態寿命測定

- 標的と速度減衰板を一緒に
 - RIBの高速速度を利用
- a.) DSAM

$\tau(2^+) \left\{ \begin{array}{l} > \\ < \end{array} \right\}$ (標的內部通過時間)

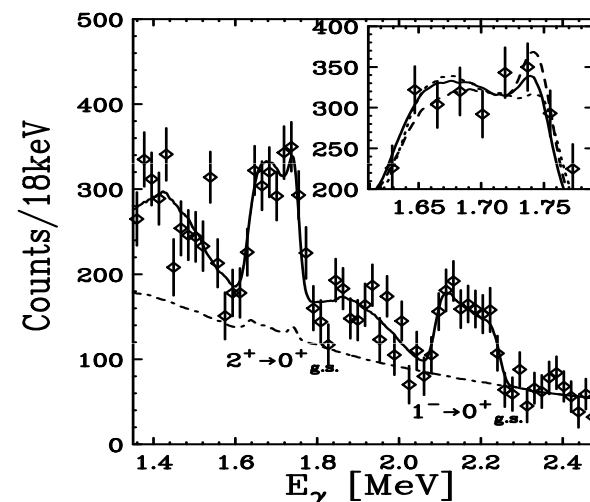
$^{12}\text{Be}(2^+)@42\text{MeV}/u$

$\beta=0.29$

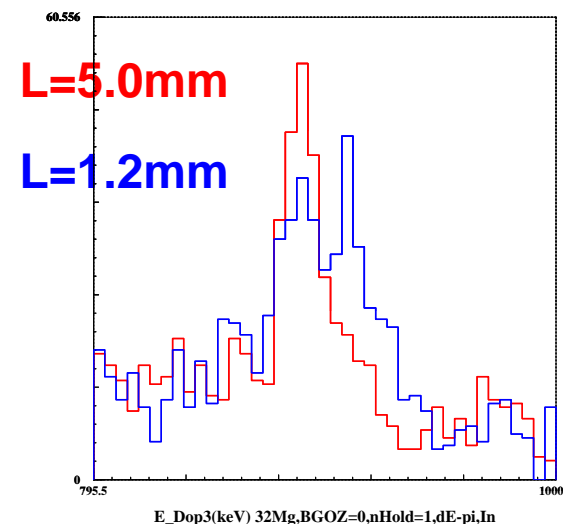
b.) Recoil Distance Method

2段階減速

$^{32}\text{Mg}(2^+)$

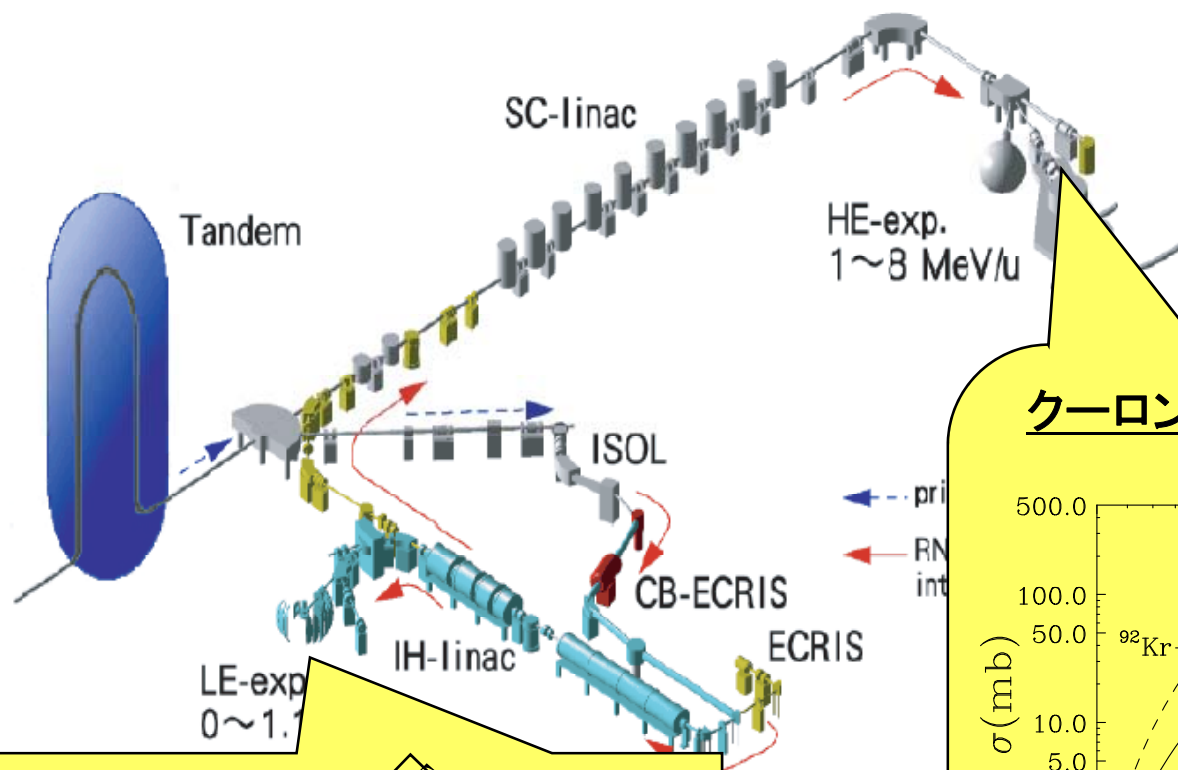


2006/09/14 16:00

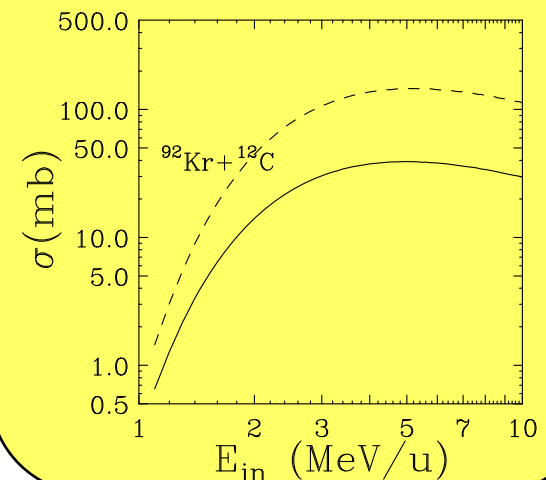


M.Suzuki et al.,

TRIACでの γ 線分光実験

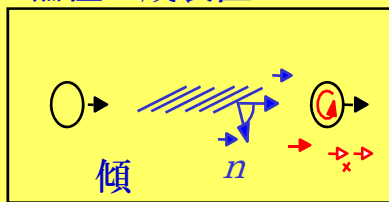


クーロン励起測定

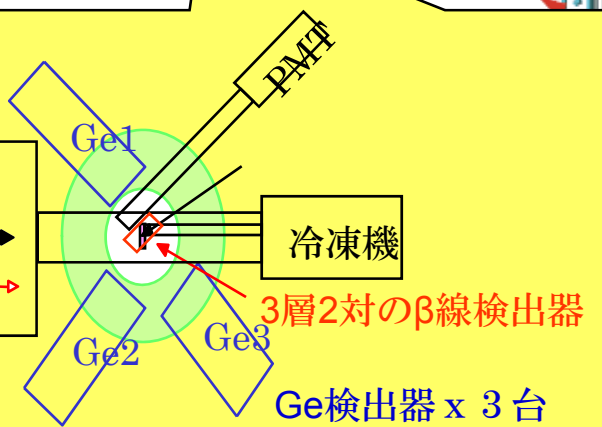


偏極 β - γ 測定

偏極生成装置



傾斜薄膜



β -delayed decay spectroscopy with spin-polarized ^ANa

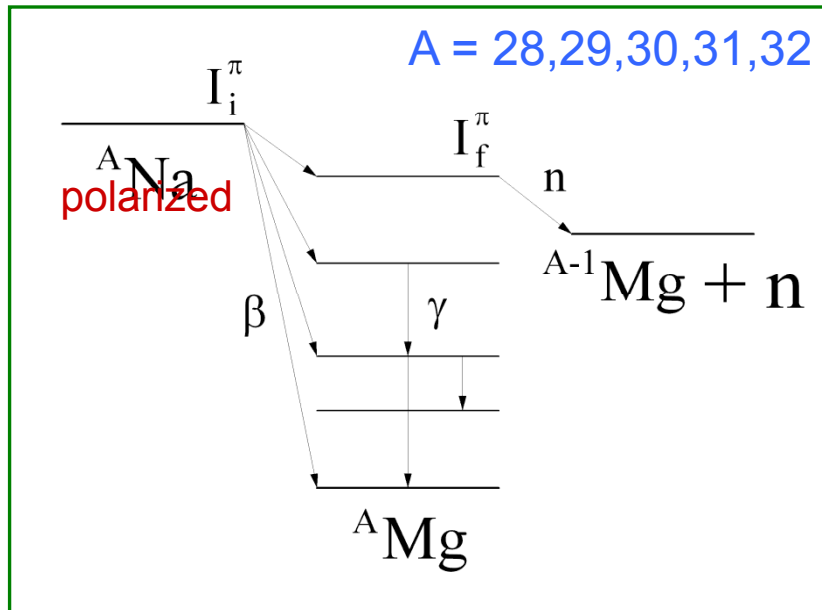
Spin-parity assignments for ^AMg levels

TRIUMF-ISAC

50% polarized Na beam

β - γ , β - γ - γ coincidence

9 Ge detectors, 3% @ 1.4MeV



2007 Nov. : ^{28}Na , ^{29}Na

2008 Oct. : ^{30}Na , ^{31}Na

OSAKA Univ. (Shimoda)
KEK, TRIUMF

